

HONG KONG PAID ALL C.D.S.

A study of the subtypes and their allocation to known covers

by A.M.T. Cheung FRPSL

The Hong Kong PAID ALL c.d.s. was introduced in 1868 as a result of the Anglo-American Postal Convention of 1867. It was struck on the front of the cover to indicate prepayment of the postage rate of 8c per half oz. or multiple thereof to the U.S.A. carried by the Pacific Mail Steam Ship Company ships to San Francisco from Hong Kong, Amoy, Canton, Foochow and Swatow.

Examples on covers are common; Air Commodore Richard Gurevitch of Australia who is a member of the Hong Kong Philatelic Society has recorded 192 covers in his book 'Queen Victoria Postal Adhesives of Hong Kong'¹

This postmark is known as type C by Webb² and PD9 by Proud³ and according to Webb it exists with three index letters A, B and C. Captain Douglas La Pierre of the USA indicated in his article⁴ that index B was used fiscally and no examples are known struck on cover.

However, none of the researchers pointed out the existence of subtypes of the Hong Kong PAID ALL c.d.s. It is highly probable that the datestamps were sent from England following the enactment of the Anglo-American Postal Convention despite the relevant G.P.O. Proof Book page bearing impressions of these datestamps is missing.

The purpose of this paper is to show the salient features of the three distinct sub-types and their allocation to the recorded trans-pacific covers. I based my research on covers listed by Gurevitch. Among 65% of the known covers I looked at, all can be safely allocated to the three subtypes shown below. Nevertheless existence of further sub-types cannot be entirely ruled out until all covers have been traced.

Results of the study are summarised in appendix 1.



Sub-type 1



Sub-type 2



Sub-type 3

Distinguishing Features

Sub-types	Size in mm	Height of index letter in mm	Dist. between L and G* in mm	Gap between G and H** in mm	Other characteristics
1	23	5¼	3¾	4	Spaced HONG, ring damaged between 'AL' at 5 o'clock
2	22½	5	4½	3½	HONG KONG more compact
3	22	3¾	3	5	Tall index letter

* Distance between foot of "L" to the top of the "G"

** Distance between top of "G" of HONG and top of "K" of KONG

Earliest and latest recorded covers

Several trans-pacific covers that do not bear the Hong Kong Paid All c.d.s. have been recorded after the 8c Convention rate became effective in January 1867; these are included in the appendix. Worthy of mention is the discovery of two covers from Hong Kong bearing the PAID – ALL handstamp which is believed to be a forerunner of the Hong Kong PAID ALL c.d.s. Complete analysis of these covers can be found in an excellent article written by Lee Scamp⁵

- The earliest cover bearing the Hong Kong PAID ALL c.d.s. subtype 1 is a ‘Late fee’ cover from Hong Kong to New York *per Japan* dated 27 Aug. 1868, franked 4c and 12c x 2 cancelled B62. The latest recorded cover with this subtype is a cover to Iowa dated SP 12 1875
- The earliest cover bearing the Hong Kong PAID ALL c.d.s. subtype 2 is a cover from Hong Kong to New York *per China* dated 19 January 1869, franked 8c cancelled B62. The latest recorded cover of this subtype and also the latest recorded Hong Kong PAID ALL cover is the one from the CPSM collection dated 2 March 1877 from Hong Kong to Cincinnati *per Oceanic*, Ohio franked 8c and 24c paying the registered fee of 8c and triple rate.
- The earliest cover bearing the Hong Kong PAID ALL c.d.s. subtype 3 is a cover from Hong Kong to Boston *per Colorado* dated 15 July 1868, franked 4c and 12c were cancelled B62. This is also the earliest cover bearing Hong Kong PAID ALL c.d.s. (fig. 1). The latest recorded cover is MY 7 1875 to Bristol County, Massachusetts.
- Subtype 1 datestamp sustained damage of the rim at 5 o’clock position adjacent to the letters ‘AL’, the earliest recorded date of this damage occurred on a cover from Amoy to New York c.d.s. dated JA 11 1873.

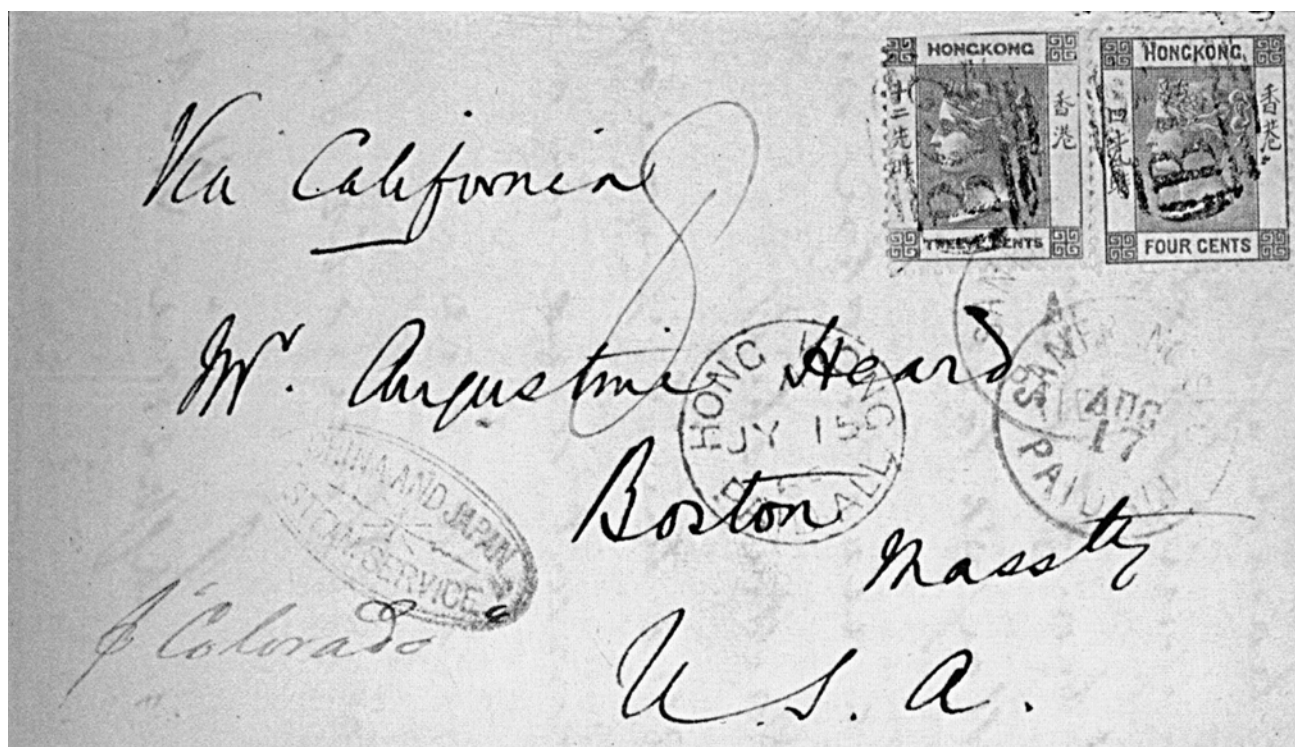


Fig. 1 The earliest recorded HONG KONG PAID ALL (subtype 3) index A on cover *ex Ishikawa*

Index letters

This study confirms the findings of Captain Douglas La Pierre of the USA⁴ that index B was not used in the datestamp for franking covers. The latest recorded with index A is a AU 30 1870 cover posted from Manila to Newburyport, Massachusetts (Fig. 2) and the earliest index C cover is dated FE 11 1871 sent from Hong Kong to Acushnet (Fig. 3). Covers sent after 30 August 1870 are all known with index C. Possible explanations including the 'time index theory' and the 'Agent vs Clerk theory'.

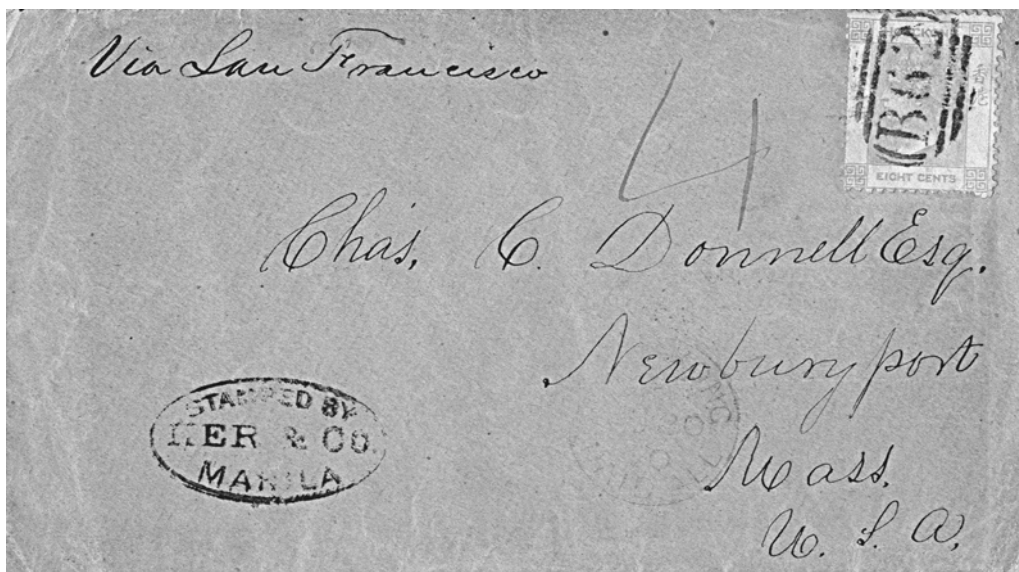


Fig. 2 The latest recorded HONG KONG PAID ALL (subtype 2) index A on cover
Sent by Philippines Forwarder Ker & Co. to Hong Kong and then to U.S.A.
Author's collection

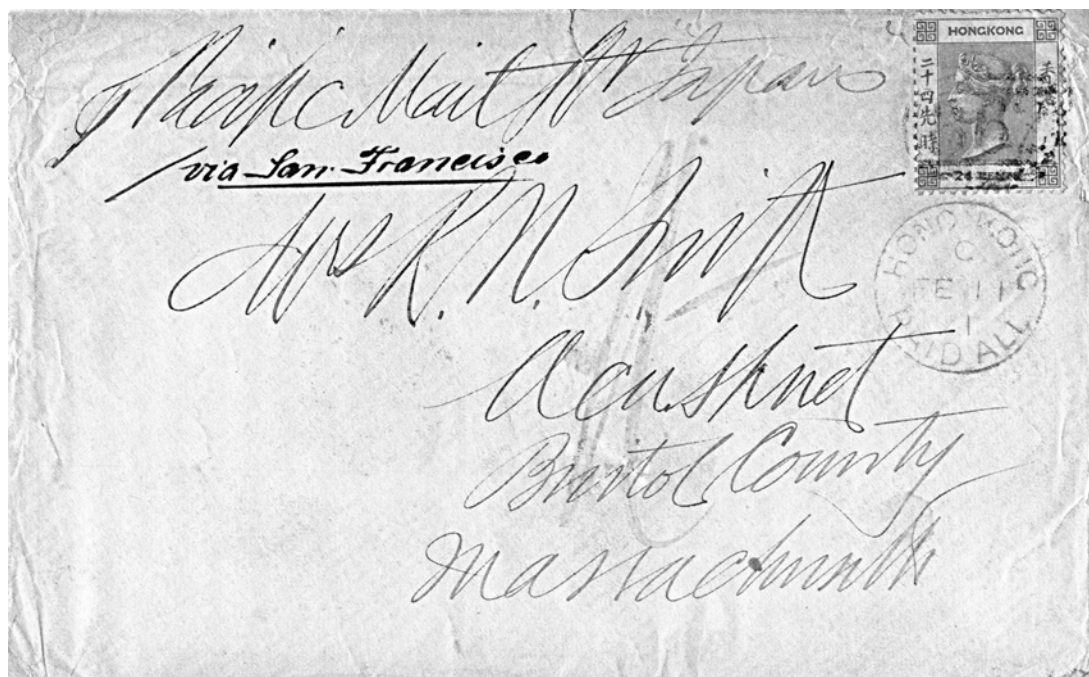


Fig. 3 The earliest recorded HONG KONG PAID ALL (subtype 2) index C on cover
One of the four covers franked with a 24c wmk CC stamp and one of the two solo 24c covers
Author's collection

Multiple franking covers

The standard rate is 8c per half oz. and most of the covers recorded are franked with 8c. Sixty-four covers among the 192 studied (33%) bear more than one stamp. Among these covers five of them were posted on the morning of the sailing paying 12c 'Late Fee'. There are only 2 registered covers dated SP 14 1876 and MR 2 1877, both subtype 2 and addressed to C.F. Adams of Cincinnati, Ohio. Interestingly, the two Hong Kong oval registered c.d.s. on them are different subtypes⁶

There are only four covers franked with 24c stamps, two of them are solo franking paying triple rate (Fig. 3)

Frequency study of covers with Hong Kong PAID ALL c.d.s.

No covers from Canton have been recorded which is rather surprising since Canton was one of the designated ports. Perhaps because of the proximity between Hong Kong and Canton, merchants often sent letters privately or with goods to Hong Kong for re-posting by chartered ships of their own.

Letters from Manila and Shanghai were brought down to Hong Kong for re-mailing since PMSS ships did not stop at either ports.

Year	No. of covers	HK	Amoy	Foochow	Swatow	Canton	Others
1868	7	4	2	-	1	-	-
1869	14	13	-	-	-	-	Manila (1)
1870	24	16	1	-	4	-	Manila (2), Shanghai (1)
1871	15	12	-	1	-	-	Manila (2)
1872	18	7	3	3	2	-	Manila (3)
1873	26	16	5	3	1	-	Manila (1)
1874	29	18	7	3	1	-	-
1875	26	15	1	2	6	-	Manila (2)
1876	31	14	3	2	12	-	-
1877	2	2	-	-	-	-	-
Total	192	117	22	14	27		12

To destinations other than U.S.A.

The HK PAID ALL c.d.s. was used specifically on mail to the U.S.A. hence it is puzzling to see covers going to other destinations struck with this c.d.s. From the list of covers studied, only four covers have been recorded. For the three covers to Japan, the single rate was also 8c per half oz. and they were sent by PMSS instead of the more frequent P&O and French Packet service. In all three cases the duty clerk applied the same treatment to these covers as the rest of the mail to U.S.A.⁷ The 12 June 1871 cover is ex. J. Sussex's Opening of China 1987 sale and is in the collection of a local collector, the 11 November 1871 cover ex. W.H. Lu and is in the author's collection. The whereabouts of the Hiogo cover is unknown.

The 11 July 1872 cover to Saigon is even more puzzling, it was rated in red 1s 9d French Packet rate (7d per quarter oz.) and this is a letter under three-quarter oz. hence triple rate. Since there are only four 8c stamps, 10c worth of stamps are missing, perhaps fallen off to the right of strip of 8c. It was sent by French Packet *Provence* which arrived at Saigon on 25 July. The cover has a Ligne N No. 9 c.d.s. used by the *Provence* and an unclear Saigon arrival. The Hong Kong PAID ALL c.d.s. must be struck by mistake. This cover was sold in an Hong Kong auction in 2004 and is believed to be in the collection of another local collector.

8c	12/06/1871	1	B62	HK	Japan, Yokohama (Fig. 4)	<i>Per America</i> Franked 8c wing-margin not tied W. Pustau HK company cachet to Thorel & Co.
8c	11/11/1871	2	B62	HK	Japan, Yokohama (Fig. 5)	<i>Per Great Republic</i> W. Pustau HK company cachet addressed to Thorel & Co
8c (2)	17/02/1872	1	B62	HK	Japan, Hiogo (Fig. 6)	<i>Per Great Republic</i>
8c (4) two stamps missing? 2c, 8c	11/07/1872	2	B62	HK	Saigon (Fig. 7)	French Packet <i>Provence</i> HK PAID ALL Struck by error

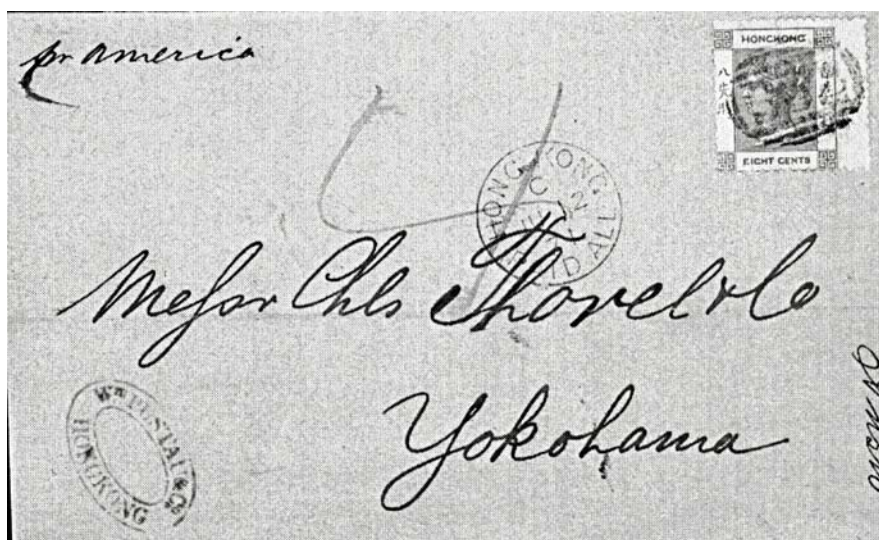


Fig. 4 (from the collection of JT)

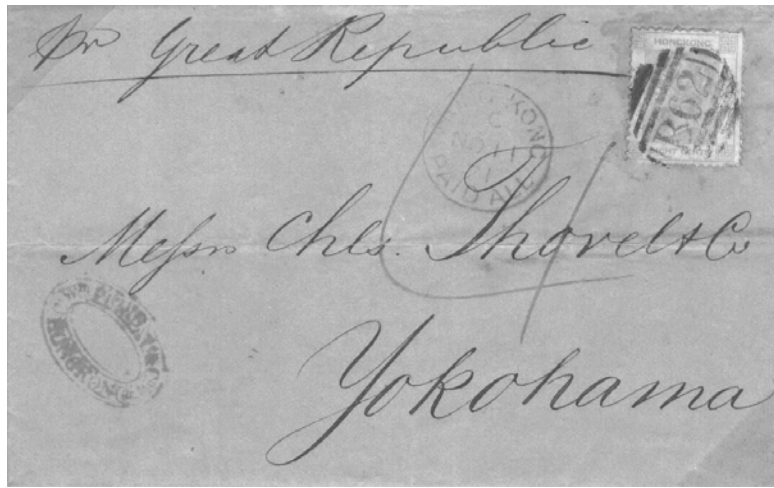


Fig. 5 (author's collection)

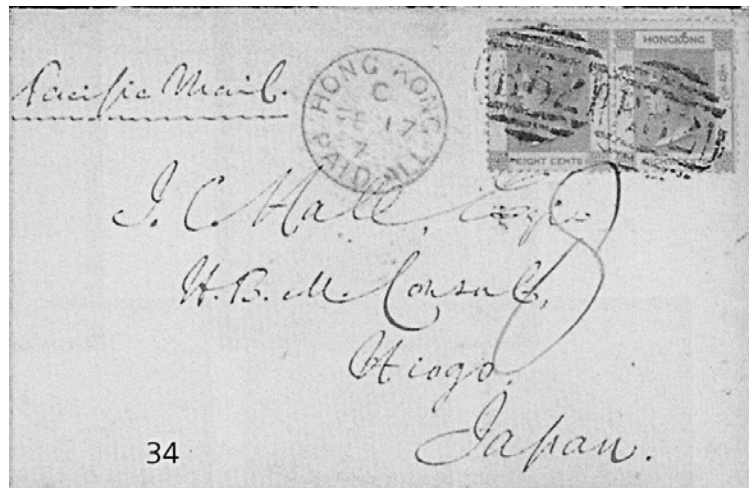
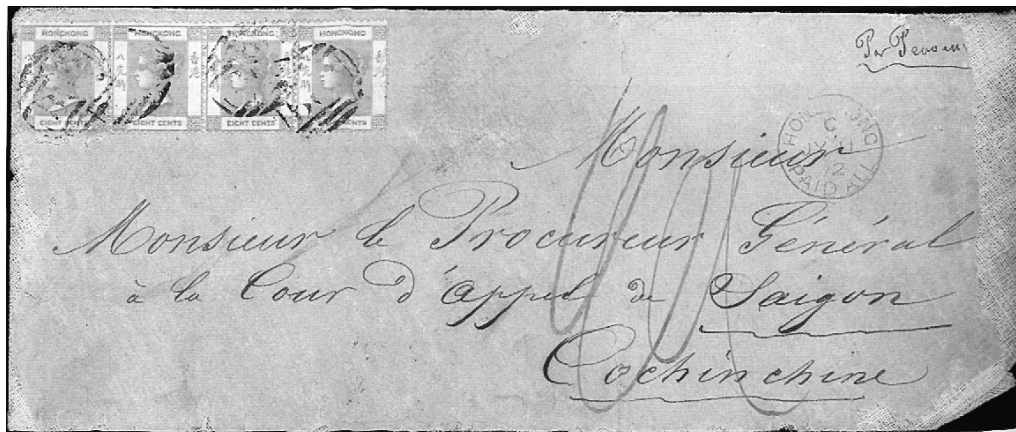


Fig. 6



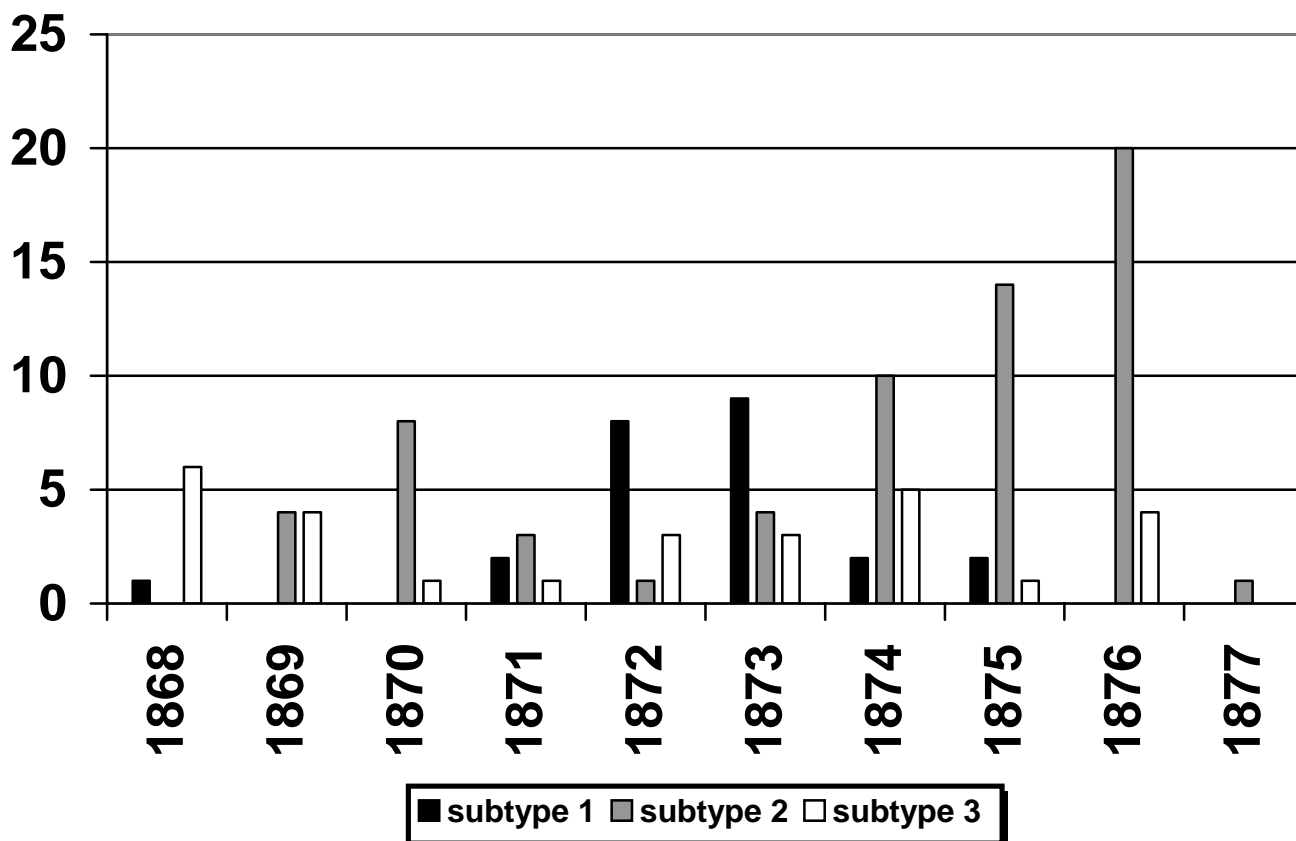
1220



Fig. 7 (from the collection of CH)

Frequency study of the three subtypes

From the chart shown here, subtype 2 is the commonest of the three subtypes and it was used throughout the entire period except in 1868. However, the pattern might change since only about 65% of the 192 covers were studied. It is hoped that collectors in possession of “recorded but not seen” covers or unlisted covers please let me know the detail and the subtype in order to make the frequency study more meaningful.



Conclusion

Out of the 192 covers studied during the ten-year period, three subtypes of the HONG KONG PAID ALL datestamps have been identified. It appears that there is a correlation between the subtype and the duty clerk. Among the covers studied, only one subtype was used on any one day, therefore, it suggests that only one duty clerk was appointed to sort the trans-pacific mail on each day*. More new covers and details of the “recorded but not seen” will be needed to prove this hypothesis.

**The departure date of the trans-pacific mail was advertised in the local newspaper and therefore, in practice, most of the letters would be received few days before the ship leaving.*

Acknowledgement

I wish to thank four eminent Hong Kong philatelists, firstly, Air Commodore Richard Gurevitch of Australia whose book¹ provided the necessary information for this study, without which this study would take a much longer time to complete. Lee Scamp of the U.S.A. and Douglas LaPierre whose articles in Hong Kong Study Circle^{4,5} inspired me to study the Hong Kong Paid All marks. Finally, our member Charles Chan FRPSL whose generous gesture of splitting the Hong Kong Paid All cover lot which he bought on the Internet prompted me to study the subtypes.

References:

1. Air Commodore Richard Gurevitch - Queen Victoria Postal Adhesives of Hong Kong
2. Col. F.W. Webb – The Philatelic and Postal History of Hong Kong and the Treaty Ports of China and Japan
3. E.B. Proud – Hong Kong and British Post Offices in the Far East
4. Capt. Douglas LaPierre – The Hong Kong Paid All c.d.s. HKSC J262 June 1987
5. Lee Scamp – The Straight-line “PAID-ALL” puzzle HKSC 317 April 2001 supplement
6. M. Goldsmith – The ‘Registered Hong Kong’ oval datestamp: A new discovery and reappraisals, HKSC J328 January 2004
7. Colin Tabcart – United Kingdom Letter Rates Inland and Overseas 1635 – 1900 p.230. State Papers Vol. 65 pp 1280-2 ‘1867, 1 November, Convention between USA and Hong Kong....Mail will also be exchanged between Yokohama and Hong Kong by US packet under the same condition.’

HONG KONG PAID ALL C.D.S. (Update 2006)

By Dr. Andrew Cheung FRPSL and Captain (USN) Douglas La Pierre

The original article was published in 2006 Hong Kong Philatelic Society Journal 10. The author identified three types of Hong Kong Paid All datestamp found on trans-pacific mail and published a listing of covers in the appendix.

After publication of the listing, four covers have been added to the listing; two of them from the Arthur White collection (information supplied by Douglas La Pierre of U.S.A.) and one from Fred Stuben of Canada. The fourth came from the Arthur White sale by Robert Siegel on 13 March 2006 (reported in HKPS newsletter April 2006 p.3 and 4).

Stamps	Date	Sub-type	Cancel	Origin	Destination	Remarks	Lot #	Reference source
8c	21/07/1872	2	B62	HK	Marblehead USA	<i>Per Alaska</i> left HK on 27 July		Arthur White collection (info by DLP)
8c	12/08/1872	3	B62	HK	Marblehead, USA	<i>Per Great Republic</i> left HK on 12 August		Arthur White collection (Info by DLP)
8c	23/08/1872	3	B62	Swatow 22 AU	NY, U.S.A.	<i>Per China</i> left HK on 27 August		Fred Stubens (via DLP)
8c	28/12/1874	2	B62	HK	USA, Boston Mass	<i>Per Altonia</i> left HK on 28 Dec.	1195	R. Siegal March 2006 (A. White collection)

Figure 1 is a letter datestamped 21 July 1872 at Hong Kong to Marblehead, Massachusetts by the PMSS *Alaska*. The ship left Yokohama on 8 August and arrived at San Francisco actually on 31 August. Datestamped San Francisco Paid All 1 September on reverse. Normal dockside handling delaying post office receipt by one day. The Hong Kong Paid All c.d.s. is sub-type 2.



Fig. 1

Figure 2 is a letter from the same correspondence datestamped 12 August 1872 at Hong Kong. Carried by PMSS *Great Republic*. The ship left Yokohama on 21 August arriving at San Francisco on 13 September. The letter went to the East overland by the Trans-Continental railroad completed in 1869. The Hong Kong Paid All c.d.s. is sub-type 3 (high index letter and wide gap between Hong and Kong).



Fig. 2

Figure 3 is a letter originated from Swatow datestamped 22 August 1872 on the back. Carried by the *China* via Yokohama to San Francisco datestamped 3 Oct. on arrival. The Hong Kong Paid All c.d.s. is sub-type 3.

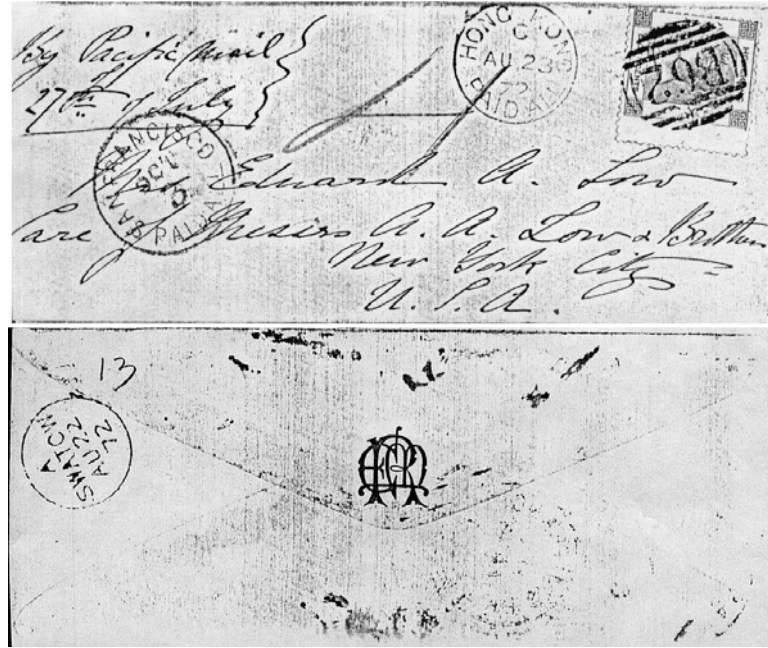


Fig. 3

Figure 4 is a letter datestamped DE 28 1874 (HK Paid All c.d.s. sub-type 2) from the Hong Kong U.S. Consulate to Boston carried by the *SS Altona* because *PMSS Japan* (Departed San Francisco on 14 November 1874, Yokohama on 11 December) caught fire on 18 December 1874 off Amoy; 2 passengers, 23 crew and 391 Chinese lost and all the mail was burnt. *SS Altona* was then chartered by the PMSS to carry the returned mail^{1,2}. The ship left Hong Kong on 28 December, Yokohama 7 – 9 January and arrived at San Francisco on 30 January 1875, mail datestamped the day after. The ship was caught by a cyclone during its transit as reported in *Alta California* in Appendix 1.

SS Altona was of 1,814 tons built in 1872 and owned by W. Von Pustau, a German firm and had carried mail before on 26 June 1874 from Hong Kong via Yokohama to San Francisco³. Frajola, Perlman and Scamp³ recorded one other voyage of the *SS Altona*- westward from San Francisco (15 February 1875) to Hong Kong (16 March 1875). Thus altogether, the *SS Altona* made three Trans-Pacific runs, two eastward and one westward.

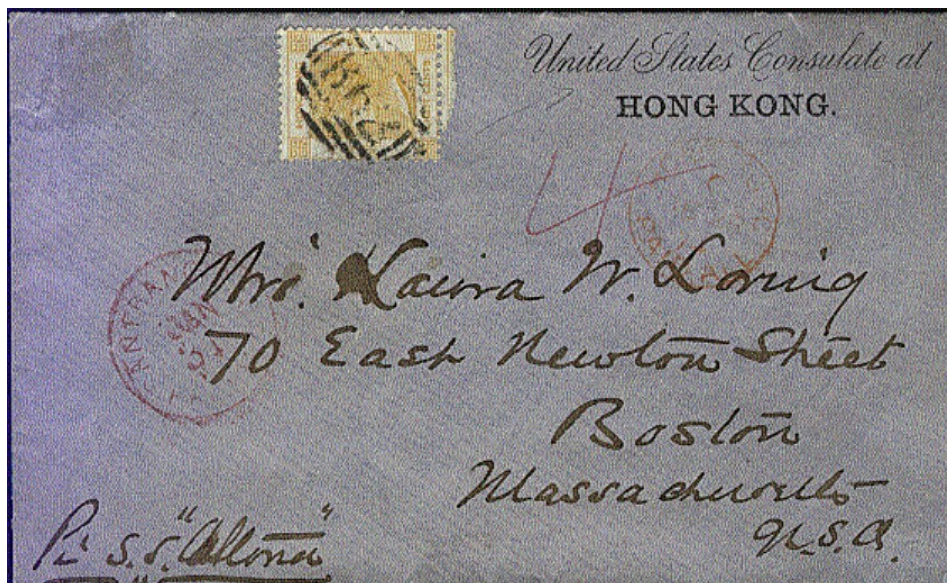


Fig. 4

Footnote: -

1. Proud on footnote {2} page 503 'The British Post Offices in the Far East' mentions the *Japan* incident and the *P&O Orissa* was used to carry the "return mail". The mail to Yokohama was carried by the *P&O Orissa* that left Hong Kong on the 22 December and the Trans-pacific mail to San Francisco was carried by the *SS Altona*.
2. A new company called China Trans-Pacific Steamship Company was formed in 1873 to run the Hong Kong - Yokohama - San Francisco route. Formed in 1873, this was a short-lived company and was the first British shipping company to operate services between the Far East and America. Founded when the Pacific Mail SS Company announced that they would no longer discharge at San Francisco, but would instead travel to Panama where cargoes would taken to the Eastern States by their own Trans-isthmus transport and Atlantic steamers. The Union Pacific and Central Pacific Railroads then needed a steamship company to operate from the Far East to San Francisco and the China Trans-Pacific Steamship Company came into operation. Passengers were few and 14-1st class seems to have been the maximum number. However, up to 600 coolies were carried on each voyage. The company was killed off by the railroads when in Nov.1874 they announced the formation of the Occidental & Oriental Steamship Company, using chartered White Star Line ships. The China Trans-Pacific Steamship Company then chartered their two ships *Vasco da Gama* and *Vancouver* to the Pacific Mail Steamship Company which received a subsidy from the U.S. Government to continue the China line.
3. Another example of a cover dated 5 July 1874 from Yokohama carried by the *SS Altona* is shown on page 166 of 'The United States Post Office in China and Japan 1867 – 1874' by Frajola, Perlman and Scamp. Collectors Club 2006. On page 214, another run was recorded being made by the ship from San Francisco to Hong Kong on 11 February 1875.

Acknowledgement: <http://www.theshipslist.com/ships/lines/china.htm>

Appendix 1

The Daily Alta California reports on Sunday 31 January 1875: -

CHINA AND JAPAN

Arrival of the German steamer "Altona"

The steamer Altona, chartered by the Pacific Mail Company, arrived last evening from Hong Kong and Yokohama. She left H.K. Dec. 28 at 5 p.m., glass falling and commencement of a north-east gale; Dec. 30th, 31st and 1st Jan. terrific northeast gale and the ship hove to; Jan 2nd gale decreasing; moderate thence to Yokohama, where we arrived Jan. 6th, and anchored at 6 P.M.; sailed thence Jan. 9th at 10:30 A.M., passed Cape Sagamai at noon, passed Meta Cape Sunday; Jan. 10th and 11th cyclone from south-west, lost two boats and shipped heavy seas, smashing deck fittings....

Appendix 1 (J10)

Hong Kong Paid All covers as per record by Richard Gurevitch's book Queen Victoria Postal Adhesives Vol. II
Itineraries of the trans-pacific voyages as per record by Edward Proud

Stamps	Date	Sub-type	Cancel	Origin	Destination	Remarks	Lot #	Reference source
8c	11/02/1867		B62	HK	USA New Jersey	<i>Per Colorado</i> - 'STEAM CHINA' cachet (to A. Webster) SF 10c MAR 21	17	S 'Ishikawa' 1981
8c	16/02/1867		B62	HK	USA San Francisco Ca.	<i>Per Colorado</i> - 'STEAM CHINA' cachet (to Macondray)	1248	Philachina Aug 2003
8c	16/02/1867		B62	HK	USA San Francisco Ca.	<i>Per Colorado</i> - 'STEAM CHINA' cachet (to Hays)	1249	Philachina Aug 2003
4c,6c,6c	16/02/1867		B62	HK	USA New Jersey	<i>Per Colorado</i> - 'STEAM CHINA' cachet (to A. Webster) SF year inverted	132	S 'Ishikawa' 1981 error "1876"
8c	14/08/1867		B62	HK	USA San Francisco Ca.	<i>Per Colorado</i>	1107	C-S HK 1992
8c	14/08/1867		B62	HK	USA Cleveland Ohio	<i>Per Colorado</i> , San Francisco "Cogwheel" arrival SEP 14, HK b/s AU 14 67	1430	Sotheby's HK 1995, info CA
8c (2)	15/08/1867		B62	HK	USA San Francisco Ca.	<i>Per Colorado</i>	Pg 062	CSPM Collection
8c	15/10/1867		B62	HK	USA Bedford N Jersey	China & Japan Steam Service cachet in red	1250	Philachina Aug 2003
8c (2)	16/01/1868		B62	HK	USA Huntington Conn.	<i>Per Great Republic</i> China & Japan Steam Service cachet in red	1251	Philachina Aug 2003
8c (missing)	24/02/1868		B62	HK	USA Lynn Mass.	<i>Per China, PAID - ALL</i> in red handstamp. (Stamp added later) ship via Panama China & Japan Steam Service cachet in red, SF arrival APR 6	Pg 5	HKSC J317 Supp. Lee Scamp
8c x2 (missing)	25/02/1868		B62	HK	USA New York	<i>Per China, PAID - ALL</i> in red handstamp. Overland by Stage coach and rail China & Japan Steam Service cachet in red, SF arrival APR 1	Pg 4	HKSC J317 Supp. Lee Scamp
12c, 4c	15/07/1868	3	B62	HK	USA Boston Mass.	<i>Per Colorado</i> Earliest recorded HK PAID ALL c.d.s.	133	S 'Ishikawa' 1980
8c	19/08/1868	3	B62	HK	USA New Plymouth	On US 10c PSE - B62 not tied & manu. date - questionable item	954	SG HK 08 1984
12c (2), 4c	27/08/1868	1	B62	HK	USA New York	<i>Per Japan</i> 12c 'late fee'	Pl 15	Webb - HK & TP
8c	07/10/1868	3	B62	HK	USA Portsmouth Vi.	<i>Per China</i>	Pg 054	CSPM Collection
8c	09/11/1868	3	B62	Amoy	USA Providence RI	<i>Per Great Republic</i> , red 'Paid All' HK cachet dated 11 Nov 68 on front	1257	Zurich Asia 7 Dec 2004
8c (2)	10/11/1868	3	B62	Swatow	USA Bristol N Hamp	<i>Per Great Republic</i> , oval 'China & Japan Steam Service' cachet in red	256	Cavendish Mar 2003
8c	30/11/1868	3	B62	Amoy	USA Providence RI	<i>Per Japan</i> , index A, oval 'China & Japan Steam Service' cachet in red	1883	Christie's HK May 95
8c	19/01/1869	2	B62	HK	USA New York	<i>Per China</i> HK PAID ALL Index A	134	S 'Ishikawa' 1980
8c	19/03/1869	2	B62	HK	USA San Francisco Ca.	<i>Per Japan</i> , oval 'China & Japan Steam Service' cachet. HK PAID ALL Index A	Pg 2	HKSC 262 Jun 87
8c	27/05/1869		B62	Manila	USA Boston Mass.	<i>Per Japan</i> . Not illustrated	Pg 7	HKSC 243 May 83
8c	10/06/1869	2	B62	HK	USA New Jersey	<i>Per Japan</i> , China and Japan Steam Service' cachet. HK PAID ALL Index A	135	S 'Ishikawa' 1980
8c	19/08/1869	3	B62	HK	USA New York	<i>Per Great Republic</i> , China and Japan Steam Service cachet	263	RL 'Burghard' Jan 61
8c	18/09/1869	3	B62	HK	USA Brooklyn NY	<i>Per America</i>	258	S 'Ishikawa' 1981
8c (2)	18/09/1869		B62	HK	USA Acushnet Mass.	<i>Per America</i> Not illustrated	1001	JB 165 1992
12c, 8c	19/10/1869	3	B62	HK	USA San Francisco Ca.	<i>Per Japan</i> HK PAID ALL Index A 'late fee'	136	S 'Ishikawa' 1980
12c, 8c	19/11/1869		B62	HK	USA New York	<i>Per China</i> , 12c 'late fee'	Pg A3	HKSC 075 Aug 60
8c (2)	19/11/1869	3	B62	HK	USA N Hamp	<i>Per China</i> , HK PAID ALL index A	69	RL 'Antonia' 1981
8c	19/11/1869	3	B62	HK	USA Ridgefield, Conn	<i>Per China</i> , HK PAID ALL index A	-	Ebay.com Sept. 2014
8c	12/12/1869		B62	HK	USA Greencastle Penn.	<i>Per America</i> left HK on 18 Dec.	2006	CRL Zurich 25 May '89
8c	18/12/1869	2	B62	HK	USA Milo Maine	<i>Per America</i> HK PAID ALL Index A	1025	Cavendish Jan 1998
8c	18/12/1869		B62	HK	USA New York	<i>Per America</i> Not illustrated	1150	JB 170 1993
8c	18/12/1869		B62	HK	USA San Francisco Ca.	<i>Per America</i> Not illustrated	479	SG HK 12 1988
8c (2)	12/01/1870		B62	HK	USA Charleston Mass.	<i>Per Japan</i>	-	info OP

8c	12/02/1870		B62	HK	USA	<i>Per China</i>	583	RL 4647 '81 10 Oct
8c	12/02/1870		B62	HK	USA New York	<i>Per China</i>	-	info BR
8cNW	12/02/1870		B62	HK	USA N Hamp	<i>Per China</i> HK PAID ALL Index A	I Pg 1	HKSC 171 May 71
8c (2)	11/03/1870		B62	HK	USA N Hamp	<i>Per America</i> HK PAID ALL Index A	Pg 3	HKSC 143 Dec 67
8c	01/04/1870		B62	HK	USA Maine	<i>Per Japan</i> left HK on 12 April HK PAID ALL Index A	4107	Robin Linke #14 2000
8c	08/04/1870	2	B62	Swatow	USA Middleton CT	<i>Per Japan</i> left HK on 12 April , re-directed to Knoxville Tenn.	396	Cavendish Oct 2003
8c (2)	10/04/1870		B62	HK	USA	<i>Per Japan</i> left HK on 12 April HK PAID ALL Index A	482	CRL 8103 Dec 85
4c (2)	11/04/1870	2	B62	HK	USA San Francisco Ca.	<i>Per Japan</i> left HK on 12 April, HK PAID ALL index A	1101	JB 206 1996
8c	09/05/1870	2	B62	Amoy	USA New York	<i>Per Great Republic</i> , HK PAID ALL MY 11 70 index A	Pg 115	CSPM Collection
8c (2)	10/05/1870		B62	HK	USA San Francisco Ca.	<i>Per Great Republic</i> left HK on 12 May HK PAID ALL Index A	II Pg 5	HKSC 169 Feb 71
8c	11/05/1870	2	B62	HK	USA New York	<i>Per Great Republic</i> left HK on 12 May HK PAID ALL Index A	Pg 056	CSPM Collection
4c (2)	12/05/1870		B62	HK	USA Milo Maine	<i>Per Great Republic</i> left HK on 12 May HK PAID ALL Index A	-	info GR
8c	12/05/1870		B62	Shanghai	USA New York	<i>Per Great Republic</i> left HK on 12 May HK PAID ALL Index A	771	M Rogers Aug 99
8c	11/06/1870	3	B62	HK	USA Clarence, Iowa	<i>Per China</i> left HK on 12 June HK PAID ALL Index A	137	S 'Ishikawa' 1980
8c	07/07/1870	2	B62	Swatow	USA Bristol N Hamp	<i>Per Japan</i> left HK on 12 July, HK Paid ALL 9Jul70' cachet on front	258	Cavendish Mar 2003
8c	08/07/1870		B62	HK	USA	<i>Per Japan</i> left HK on 12 July HK PAID ALL Index A	A652	HKSC 118 Mar 65
4c (2)	09/07/1870		B62	Swatow	USA Stratham NH	<i>Per Japan</i> left HK on 12 July HK PAID ALL Index A	-	info BR
8c (2)	10/07/1870	2	B62	HK	USA N Hamp	<i>Per Japan</i> left HK on 12 July, HK PAID ALL index A	205	Phillips 11 May 89
8c (2)	12/07/1870	-	B62	HK	USA	<i>Per Japan</i> Not illustrated	457	JB 018 1980
8c	31/07/1870	-	B62	Swatow	USA	<i>Per America</i> Not illustrated	1257	C-S HK 1992
8c (2)	12/08/1870	2	B62	HK	USA Mass.	<i>Per America</i> . Front only HK PAID ALL Index A	1321	JB 075 1985
8c	15/08/1870		B62	Manila	USA Newburyport Mass.	<i>Per Great Republic</i> left HK on 12 Sep. HK PAID ALL Index A	1224	Cavendish Apr 1995
8c	30/08/1870	2	B62	Manila	USA Newburyport Mass.	<i>Per Great Republic</i> left HK on 12 Sep. Latest recorded with index A	1218	Philachina Nov 2004
24c	11/02/1871	2	B62	HK	USA Acushnet Mass.	<i>Per Japan</i> left HK on 11 Feb. Earliest recorded with index C	-	info CA
12c, 8c	13/03/1871	3	B62	HK	USA Clarence Iowa	<i>Per America</i> Shown as 1 March, last digit unclear, 12c 'late fee'	Pg 065	CSPM Collection
8c (2)	25/03/1871		B62	HK	USA Clarence Iowa	<i>Per Great Republic</i> left HK on 12 April	-	A.Holtz stock
8c	12/04/1871		B62	HK	USA Ellington Conn.	<i>Per Great Republic</i> left HK on 12 April	-	C. Rainey stock
8c	30/05/1871		B62	Foochow	USA Greenwich Conn.	<i>Per America</i> left HK on 12 June	2012	CRL Zurich 25 May '89
8c	12/06/1871	1	B62	HK	Japan, Yokohama	<i>Per America</i> W. Pustau HK company cachet to Thorel & Co. 8c wing-margin	3109	CRL Nov. 87
12c, 4c	12/06/1871		B62	HK	USA Bristol County Mass.	<i>Per America</i> left HK on 12 June	-	info BR
12c, 2c (2)	24/07/1871	1	B62	HK	USA Ohio	<i>Per Alaska</i> left HK on 25 July. US Consulate General HK long envelope	1914	Tres-Hunters 91 May
12c, 4c	24/07/1871		B62	HK	USA	<i>Per Alaska</i> . Not illustrated	1332	JB 133 1989
6c, 2c	16/08/1871		B62	Manila	USA Boston Mass.	<i>Per Arizona</i> left HK on ? (HK date 16 Aug '71)	269	RL 258 Mar '61
8c	12/09/1871		B62	HK	USA New York	<i>Per America</i> left HK on 12 Sep.	1451	Cherrystone '91 Mar
8c	12/10/1871	2	B62	HK	USA New York	<i>Per Japan</i> left HK on 12 Oct.	1486	Sotheby's HK 1995
8c	11/11/1871	2	B62	HK	Japan, Yokohama	<i>Per Great Republic</i> W. Pustau HK company cachet addressed to Thorel & Co.	196	JB Lu 1 1985 info CA
4c (2)	10/11/1871		B62	Manila	USA Boston Mass.	<i>Per Great Republic</i> Sent from Manila to Hk 1-Nov-71	-	info BR
8c, 2c	12/12/1871		B62	HK	USA San Francisco Ca.	<i>Per America</i> left HK on 12 Dec.	560	M Rogers Jan 02
8c	04/01/1872	1	B62	Foochow	USA	<i>Per Japan</i> left HK on 12 Jan.	1335	SGHK 2/94 Jparker
24c	12/01/1872		B62	HK	USA Bristol County Mass.	<i>Per Japan</i> left HK on 12 Jan.	-	info OP
8c	29/01/1872		B62	Foochow	USA Mass.	<i>Per Great Republic</i> left HK on 17 Feb. cds Foochow wrongly set at '29 Jy 72'	-	info CA

8c (2)	05/02/1872	?	B62	Swatow	USA N Hamp	<i>Per Great Republic</i> left HK on 17 Feb. Poorly illustrated type uncertain	1020	JB 043 1982
8c (2)	17/02/1872	1	B62	HK	Japan, Hiogo	<i>Per Great Republic</i> left HK on 17 Feb.	34	Spink London, Feb. 2004
8c (2)	06/03/1872		B62	HK	USA New York	<i>Per America</i> left HK on 16 Mar. Not illustrated	1109	C-S HK 1992
8c	12/03/1872	3	B62	Swatow	USA New York	<i>Per America</i> left HK on 16 Mar. Front of cover not illustrated	1322	Philachina Aug 2003, JB 6/13#3007
8c	02/04/1872	1	B62	Amoy	USA New York	<i>Per Japan</i> left HK on 12 April	Pl 15	Webb - HK & TP
8c (4) 2 stamps missing	11/07/1872	2	B62	HK	Saigon	HK PAID ALL struck by error since letter was sent by French Packet <i>Provence</i> Rated 1s 9d, as only four 8c present, 10c worth of stamps missing probably made up of 2c and 8c.	1220	PhilaC 11/04
8c	21/07/1872	2	B62	HK	Marblehead USA	<i>Per Alaska</i> left HK on 27 July		Arthur White collection
8c	24/07/1872	1	B62	Amoy	USA New York	<i>Per Alaska</i> left HK on 27 July (HK Postmark 26 Jul 72) Culbertson	905	Cavendish May 2002
8c	25/07/1872		B62	Manila	USA Boston Mass.	<i>Per Alaska</i> left HK on 27 July	-	info G. Lewis
8c	27/07/1872	3	B62	HK	USA San Francisco Ca.	<i>Per Alaska</i> left HK on 27 July	Pg 064	CSPM Collection
8c	31/07/1872		B62	Manila	USA	<i>Per Great Republic</i> left HK on 12 Aug. Not illustrated	1025	JB 161 1992
8c	12/08/1872	3	B62	HK	Marblehead, USA	<i>Per Great Republic</i> left HK on 12 August		Arthur White collection
8c	23/08/1872	3	B62	Swatow22AU	NY, U.S.A.	<i>Per China</i> left HK on 27 August		Fred Stubens
8c	11/09/1872	1	B62	Manila	USA Bath Maine	<i>Per Colorado</i> left HK on 21 Sep. Handstamp PR PMSS Coy Via San Francisco & Overland	2158	Christie's HK May 95
8c	17/09/1872	1	B62	HK	USA New York	<i>Per Colorado</i> left HK on 21 Sep.	1026	JB 161 1992
8c	30/11/1872	1	B62	Amoy	USA New York	<i>Per Colorado</i> left HK on 12 Dec. Culbertson	204	Phillips 11 May 89
8c	12/12/1872	3	B62	HK	USA Clarence Iowa	<i>Per Colorado</i> left HK on 12 Dec. ex. Stuben	33203	Feldman 1997
8c	30/12/1872	1	B62	Foochow	USA Greenwich Conn.	<i>Per Japan</i> left HK on 11 Jan.	881	JB 136 1990
2c (4)	06/01/1873	1	B62	Foochow	USA New Jersey	<i>Per Japan</i> left HK on 11 Jan. HK PAID ALL partially overstruck on 2c	477	SG HK 10 1986
12c, 8c, 4c	09/01/1873		B62	HK	USA Portland	Front only. Not illustrated	863	SG HK 15 1993
8c	09/01/1873		B62	HK	USA New York NY	<i>Per Japan</i> left HK on 11 Jan.	1298	Harmer (L) '00 Apr
8c	10/01/1873	1	B62	Amoy	USA New York NY	<i>Per Japan</i> left HK on 11 Jan. HK Paid All JA 11 73 Earliest rim break	20	JB Lu 2 1985
	11/01/1873	2	B62	HK	USA	<i>Per Japan</i> left HK on 11 Jan.	1164	Zurich Asia Dec. 2004
8c	08/03/1873	1	B62	Amoy	USA New York	<i>Per Colorado</i> left HK on 12 Mar.	457	S 'Ishikawa' 1980 ZA05
8c	12/03/1873	1	B62	HK	USA	<i>Per Colorado</i> left HK on 12 Mar.	546	Sun #26 Dec.79
8c	02/04/1873		B62	Amoy	USA New York	<i>Per Japan</i> left HK on 12 April	50378	Feldman '86
8c	09/04/1873	1	B62	Amoy	USA New York	<i>Per Japan</i> left HK on 12 April HK PAID ALL AP 11 73	965	JB 096 1986
8c	09/05/1873	1	B62	HK	USA Boston Mass.	<i>Per Alaska</i> left HK on 12 May	3061	CRL Dyer 1 1984
8c	12/05/1873		B62	HK	USA Clarence Iowa	<i>Per Alaska</i> left HK on 12 May	1073	Leski 1999 Jun
4c (2)	12/06/1873		B62	HK	USA Boston Mass.	<i>Per Colorado</i> left HK on 12 June	-	info BR
4c (2)	12/06/1873		B62	HK	USA Brooklyn Mass.	<i>Per Colorado</i> left HK on 12 June	585	RL 4647 '81 10 Oct
8c	21/06/1873		B62	Manila	USA Newtonville Mass.	<i>Per Japan</i> left HK on 27 June	113	Torres Bar'a May '94
8c (2)	30/06/1873		B62	Foochow	USA	<i>Per Quang Se (chartered by PMSS)</i> left HK on 2 July. Not illustrated	1179	C-S HK 1992
8c	09/07/1873	1	B62	Amoy	USA New York	<i>Per Great Republic</i> left HK on 26 July. HK Paid All JY 11 73	955	SG HK 08 1984 JB LU2 #21
8c	12/07/1873	2	B62	HK	USA Mass.	<i>Per Great Republic</i> left HK on 26 July	3017	CRL Dyer 2 1985
8c	11/08/1873	1	B62	Foochow	USA Greenwich Conn.	<i>Per Macgregor (chartered by PMSS)</i> left HK on 12 Aug. HK Paid All AU 15 73	873	Zurich Asia 2005
8c	12/08/1873	2	B62	HK	USA Mass.	<i>Per Macgregor (chartered by PMSS)</i> left HK on 12 Aug.	992	JB 030 1981
12c (2), 4c	27/08/1873		B62	HK	USA New York	<i>Per Macgregor (chartered by PMSS)</i> left HK on 12 Aug. 12c 'late fee'	-	info BR
8c (2)	10/10/1873	3	B62	HK	USA	<i>Per Japan</i> left HK on 11 Oct. Year error "37" on type 3 c.d.s. only	1168	Zurich Asia Dec. 2004
8c	10/10/1873	3	B62	HK	USA Boston Mass.	<i>Per Japan</i> left HK on 11 Oct. ex-Manila : date shown is in HK year error "37"	1660	Spink HK Nov '02

4c (2)	11/10/1873		B62	HK	USA Philadelphia Pa.	<i>Per Japan</i> left HK on 11 Oct.	1900	SG HK 02 1977
8c (2)	11/10/1873	2	B62	HK	USA Philadelphia Pa.	<i>Per Japan</i> left HK on 11 Oct.	Pg 4	HKSC 259 Sep 86
8c	08/11/1873	1	B62	HK	USA Tully NY	<i>Per Alaska</i> left HK on 8 Nov.	954	Philachina Jul 2004
8c	25/11/1873	3	B62	Swatow	USA New Hampshire	<i>Per Alaska</i> left HK on 27 Nov. HK PAID ALL NO 26 73	952	Zurich Asia 2005
8c	08/01/1874		B62	Amoy	USA New York	<i>Per Vasco Da Gama (chartered by PMSS)</i> left HK on 8 Jan.	Pg A2	HKSC 076 Sep 60
8c	10/01/1874		B62	HK	USA	<i>Per Japan</i> left HK on 12 Jan. Not illustrated	1884	Christie's HK May 95
8c	10/01/1874	2	B62	Amoy	USA New York	<i>Per Japan</i> left HK on 12 Jan. Culbertson	527	Spink Nov.2004
8c	12/02/1874	2	B62	HK	USA Clarence Iowa	<i>Per Great Republic</i> left HK on 12 Feb. SGHK 2/94 JP#1262, Cvd. 9/04 #423	208	JB Lu 1 1985
8c (2)	23/02/1874	2	B62	Amoy	USA New York	<i>Per Alaska</i> left HK on 27 Feb. HK Paid All FE 26 74	23	JB Lu 2 1985
6c, 2c	27/02/1874	1	B62	HK	USA San Francisco Ca.	<i>Per Alaska</i> . HK PAID ALL c.d.s. FE 27 74 rim break inked over or repaired?	209	JB Lu 1 1985
8c	16/03/1874	2	B62	HK	USA Acushnet Mass.	<i>Per China</i>	1270	JB 217 1997
8c	15/04/1874	3	B62	HK	USA	<i>Per Japan</i>		info CA
8c	05/05/1874	3	B62	Amoy	USA New York	<i>Per Great Republic</i> left HK on 13 May. Re-addressed and USA stamp added	A3	HKSC240 Nov82-C ZA05
8c	27/05/1874	3	B62	HK	USA Acushnet Mass.	<i>Per Alaska</i> left HK on 27 May	241	SG Lond Nov 97
8c	04/06/1874	2	B62	Amoy	USA New York	<i>Per China</i> left HK on 10 June	714	SG HK 12 1988/ZA11.06(1261)
8c	11/07/1874	1	B62	HK	USA	<i>Per Colorado</i> left HK on 11 July. Delayed in HK due to repair work	1604	Zurich Asia Jan. 2004
8c (2)	11/07/1874		B62	HK	USA Boston Mass.	<i>Per Colorado</i> left HK on 11 July. Delayed in HK due to repair work	-	info UKC
8c (2)	11/07/1874		Dumb Cancel	HK	USA San Francisco Ca.	<i>Per Colorado</i> left HK on 11 July. Includes HK 'Paid All' in red on cover	-	info OP
8c	21/07/1874	2	B62	Swatow	USA Saint Albans Vermont	<i>Per Japan</i> left HK on 25 July. HK Paid All JY 22 74	1287	JB122 1988, TH12/89, ZA05
8c	25/07/1874	3	B62	HK	USA Southbridge Mass.	<i>Per Japan</i> PR.PM.S.S.Coy/VIA SAN FRANCISCO/& OVERLAND	118	SG Lond Nov 97
8c	05/08/1874		B62	HK	USA Acushnet Mass.	<i>Per Great Republic</i> Not illustrated	1465	JB 210 1997
8c (2)	03/09/1874		B62	HK	USA Boston Mass.	<i>Per Costa Rica</i> left HK on 19 Sep.	-	info UKC
8c	09/09/1874	2	B62	Foochow	USA Mass.	<i>Per Costa Rica</i> left HK on 19 Sep.	1787	C-S HK 1993
8c	09/09/1874	2	B62	Foochow	USA South Cadly Mass.	<i>Per Costa Rica</i> left HK on 19 Sep. via San Francisco	1271	Zurich Asia 7 Dec 2004
8c	01/10/1874		B62	HK	USA N Hamp	Not illustrated	75	RL 'Antonia' 1981
8c	03/10/1874		B62	HK	USA Iowa	<i>Per Nevada</i> left HK on 5 Oct.	586	RL 4647 '81 10 Oct
4c (2)	14/10/1874		B62	Foochow	USA Chicago Ill.	<i>Per Vancouver</i> left HK on 28 Oct.	1939	Christie's HK May 95
8c	24/10/1874	3	B62	Amoy	USA New York	<i>Per Great Republic</i> left HK on 11 Nov. HK Paid All OC26 74	-	ebay 10 AP 07
8c	30/10/1874	2	B62	Amoy	USA New York	<i>Per Great Republic</i> left HK on 11 Nov. HK Paid All NO 1 74	1289	SG HK 16 1994
8c	02/11/1874	2	B62	Amoy	USA New York	<i>Per Great Republic</i> left HK on 11 Nov. HK Paid All NO 4 74	25	JB Lu 2 1985 ZA05
8c	11/11/1874		B62	HK	USA Iowa	<i>Per Great Republic</i> left HK on 11 Nov.	Pg A3	HKSC 075 Aug 60
8c	24/11/1874	2	B62	HK	USA	<i>Per Vasco da Gama</i> left HK	1603	Zurich Asia Jan. 2004
8c	12/12/1874	3	B62	HK	USA	<i>Per Colorado</i> left HK on 12 Dec.	3105	CRL Nov. 87
8c	14/12/1874		B62	HK	USA Portsmouth NY	<i>Per P&O Orisa</i> to Japan the intended SS <i>Japan</i> caught fire in Japan on 18 Dec.	945	A&A HK #3 Apr 2000
8c	28/12/1874	2	B62	HK	USA, Boston Mass	<i>Per Altonia</i> left HK on 28 Dec.	1195	R. Siegal March 2006 (A. White)
8c	13/01/1875	1	B62	HK	USA	<i>Per Alaska</i> left HK on 13 Jan.	1164	Zurich Asia Dec. 2004
8c	17/02/1875		B62	HK	USA St Louis Missouri	<i>Per Great Republic</i> left HK on 1 Mar.	-	A.Holtz stock
8c (2)	24/02/1875	2	B62	Swatow	USA	<i>Per Vasco Da Gama</i> left HK on 8 Mar.		info CA
8c	11/03/1875	2	B62	HK	USA	<i>Per Vasco Da Gama</i> left HK on 8 Mar.	1720	C-S HK 1993
8c (2)	25/03/1875	2	B62	Swatow	USA St Louis Mo.	<i>Per City of Peking</i> left HK on 1 April	1831	C-S HK 1993/ZA3.06(1294)
8c	26/03/1875	2	B62	HK	USA	<i>Per City of Peking</i> left HK on 1 April	1306	Zurich Asia Dec. 2004

8c	29/03/1875		B62 Blue	Swatow	USA N Hamp	<i>Per City of Peking</i> left HK on 1 April . Not illustrated	1491	Sotheby's HK 1995
8c	29/03/1875	2	B62	Amoy	USA New York	<i>Per City of Peking</i> left HK on 1 April . HK Paid All MR 31 75	26	JB Lu 2 1985
12c, 4c	07/05/1875	3	B62	HK	USA Bristol County Mass.	<i>Per City of Tokin</i> left HK on 15 May	931	JB 189 1995
8c	14/05/1875	2	B62 Blue	HK	USA San Francisco Ca.	<i>Per City of Tokin</i> left HK on 15 May	ebay00	info AC
8c	15/05/1875	2	B62	Foochow	USA Greenwich Conn.	<i>Per City of Tokin</i> left HK on 15 May	1021	JB 149 1991
8c	05/06/1875	-	B62	HK	USA Hartford Conn.	<i>Per Oceanic</i> left HK 13 June No HK PAID ALL, HK c.d.s. index A b/s 5 JU 75	1006	JB 165 1992
8c	14/06/1875	2	B62	HK	USA San Francisco Ca.	<i>Per Great Republic</i> left HK on 16 June	Pg 2	HKSC 262 Jun 87
8c	21/06/1875		B62	Manila	USA Mass.	<i>Per Belgic</i>	Pg 3	HKSC 143 Dec 67
8c	30/06/1875		B62	Manila	USA Salem	<i>Per City of Peking</i> left HK on 10 July. No HK PAID ALL c.d.s. HK b/s	1298	C-S HK 1992
8c	10/07/1875	2	B62 Blue	HK	USA Iowa	<i>Per City of Peking</i> left HK on 10 July	220	JB Lu 1 1985
8c	29/08/1875		S2 Blue	Swatow	USA N Hamp	Earliest S2 on cover	DC57	HKSC 180
8c	12/09/1875	1	62B black	HK	USA Iowa	<i>Per Great Republic</i>	111	S 'Ishikawa' 1980
24c, 8c	28/09/1875		B62	HK	USA San Francisco Ca.	Not illustrated (possible late fee paid)	240	SG HK 10 1986
4c (2)	14/10/1875		B62	Foochow	USA Chicago Ill.	Not illustrated	1340	Spink HK 1999
8c	20/10/1875	2	S2	Swatow	USA	ex. Wingate	1369	PhilaC April 2003
8c	29/10/1875	2	S2 Blue	Swatow	USA Stratham N Hamp	<i>Per Gaelic</i> HK PAID ALL OC 30 75	613	S 'Ishikawa' 1980
8c (2)	13/11/1875	2	B62	HK	USA Acushnet Mass.	<i>Per Alaska</i> left HK on 15 Nov.	1047	SG/JB HK 1992
8c (2)	30/11/1875	2	B62	HK	USA Acushnet Mass.	<i>Per Oceanic</i> left HK on 30 Nov.	1191	JB 212 1997
8c (2)	30/11/1875	2	B62	HK	USA Boston Mass.	<i>Per Oceanic</i> left HK on 30 Nov.	3063	CRL Dyer 1 1984
8c	17/01/1875		B62	HK	USA Clarence Iowa	<i>Per China</i> left HK on 17 Jan..	1713	Unitric May '99
4c (2)	03/02/1876		62B	HK	USA Boston Mass.	<i>Per Gaelic</i> left HK on 3 Feb.	-	Sunburst Stamps stock
8c	03/02/1876	2	62B	HK	USA New York	<i>Per Gaelic</i> left HK on 3 Feb.	1117	C-S HK 1992
8c	22/02/1876	2	F1 Blue	Foochow	USA	<i>Per Oceanic</i> left HK on 1 Mar.	163	Cavendish Mar 2003
8c	26/02/1876	2	F1	Foochow	USA South Hadley Mass.	<i>Per Oceanic</i> left HK on 1 Mar.	1180	C-S HK 1992
8c	29/02/1876	2	B62	HK	USA	<i>Per Oceanic</i> left HK on 1 Mar.	3104	CRB Nov. 1987
8c	01/04/1876	3	B62	HK	USA Iowa	<i>Per Belgic</i> left HK on 1 April	79	RL 'Antonia' 1981
4c (2)	12/04/1876	2	S2 Blue	Swatow	USA Stratham N Hamp	<i>Per Colorado</i> left HK on 15 April CRL 11/84 Dyer lot3350	259	Cavendish Mar 2003
8c	12/04/1876	3	B62	HK	USA New York	<i>Per Colorado</i> left HK on 15 April	1070	JB 123 1989
8c	15/04/1876	3	B62	HK	USA New York	<i>Per Colorado</i> left HK on 15 April	2006	Tres-Hunters 89 Dec
12c, 4c	10/05/1876	2	S2 Blue	Swatow	USA N Hamp	<i>Per City of Peking</i> left HK on 15 May	2078	Christie's HK May 95
8c (2)	12/05/1876	2	S2 Blue	Swatow	USA	<i>Per City of Peking</i> left HK on 15 May	3351	CRL Nov. 84 Dyer
8c	13/05/1876	2	B62	HK	USA N Hamp	<i>Per City of Peking</i> left HK on 15 May	80	RL 'Antonia' 1981
12c, 4c	10/05/1876	2	S2 Blue	Swatow	USA N Hamp	<i>Per City of Peking</i> left HK on 15 May	2078	Christie's HK May 95
8c	29/05/1876	2	B62	Amoy	USA New York	<i>Per Oceanic</i> left HK 1 June. HK PAID ALL MY 31 76	A15	CRL 4/85 Dyer ZA Nov 00
12c, 4c	31/05/1876	2	S2 Blue	Swatow	USA N Hamp	<i>Per Oceanic</i> left HK 1 June	3351	CRL Dyer 1 1984
8c	27/06/1876	2	S2 Blue24/5	Swatow	USA N Hamp	<i>Per Belgic</i> left HK 1 July. CRB 4/85 Dyer lot 3158	B15	ZA May 01, ZA N006(1422)
8c	24/07/1876	2	S2	Swatow	USA	<i>Per Gaelic</i> left HK on 1 Aug. HK PAID ALL JY 27 76	1260	C-S HK 1992
8c	26/07/1876		S2 Blue	Swatow	USA N Hamp	<i>Per Gaelic</i> left HK on 1 Aug.	Pg 6	HKSC 135 Dec 66
8c	26/07/1876	2	B62	Amoy	USA New York	<i>Per Gaelic</i> left HK on 1 Aug. HK Paid All JY 28 76	28	JB Lu 2 1985
8c	27/07/1876	2	S2 Blue	Swatow	USA, Lima, Ohio	<i>Per Gaelic</i> left HK on 1 Aug.	1295	ZA 3.06
8c	27/07/1876	2	B62	HK	USA Boston Mass.	<i>Per Gaelic</i> left HK on 1 Aug.	-	info AC

8c	22/08/1876	3	B62	Swatow	USA New York	<i>Per Oceanic</i> left HK on 1 Sep. Swatow b/s in blue AU 22 76, HK PA AU 23 76	33196	Feldman '97
8c	31/08/1876	2	B62	HK	USA Acushnet Mass.	<i>Per Oceanic</i> left HK on 1 Sep.	1148	JB 221 1998
12c, 8c, 4c	14/09/1876	2	B62	HK	USA Cincinnati Ohio	<i>Per Alaska</i> left HK on 15 Sep. Registered	118	S 'Ishikawa' 1980
8c	29/09/1876	?	B62	HK	USA Boston Mass.	<i>Per Belgic</i> illustration unclear	636	SG HK 08 1984
8c (2)	29/09/1876		B62	HK	USA	<i>Per Belgic</i>	845	M.Rogers 52 Nov 97
8c (2)	13/10/1876	2	S2 Blue	Swatow	USA New Hampshire	<i>Per Great Republic</i> left HK on 16 Oct. HK Paid All dated OC 14 76	397	Cavendish Oct 2003
8c	31/10/1876	2	S2 Blue	Swatow	USA N Hamp	<i>Per Gaelic</i> left HK on 4 Nov. HK Paid All dated NO 1 76	300/848	RLAntonia 81 SG HK 12 1988
4c (2)	04/12/1876		B62	HK	USA Bristol County Mass.	<i>Per Oceanic</i> left HK on 4 Dec.	-	info BR
4c (2)	28/12/1876	2	D27	Amoy	USA New York	<i>Per Belgic</i> HK Paid All dated DE 31 76	3235	CRL Dyer 1 1984
8c	17/01/1877		B62	HK	USA San Francisco Ca.	<i>Per Gaelic</i> left HK on 1 Feb.	1925	Tres-Hunters 96 Apr
24c, 8c	02/03/1877	2	B62	HK	USA Cincinnati Ohio	<i>Per Oceanic</i> . Registered HK oval	Pg 066	CSPM Collection